

**Module 1: Introduction to Social
Entrepreneurship**

LU 3: "Introduction to Social Innovation"

Partner: Technological University Shannon (TUS)

WBL Activity



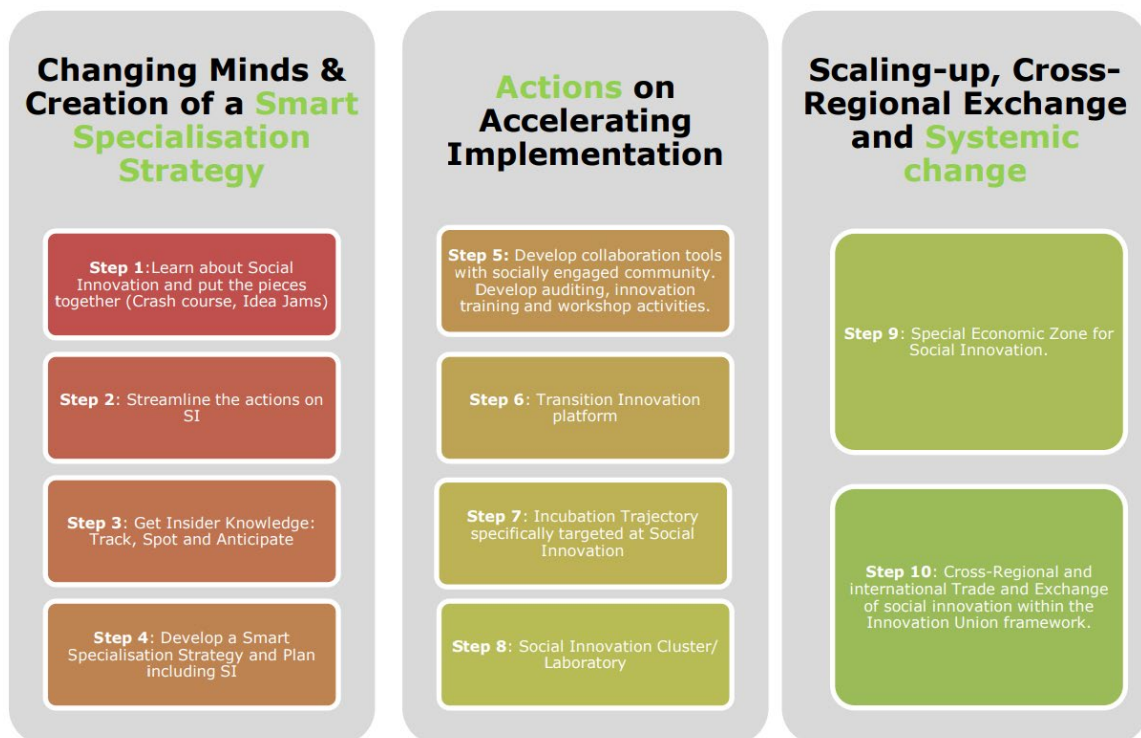
WORK-BASED LEARNING (10 Hours)

The proposed activities might be implemented individually or in groups of learners that implement the WBL part of their training in a social enterprise.

WBL Activities

During your time in the social enterprise complete the 10 steps that the European Commission (2013) developed for authorities to promote social innovation.

Remember the steps are presented in an order of increasing involvement into social innovation, but the order can differ depending on a region's level of knowledge and development. Some can start from Step 4, while others might need to start from Step 1. Some might be interested in Step 6, while others might not want to implement it.



Although all the steps are important, five are crucial so remember to include these 5 in your activity:

Step 1: Learn about Social Innovation and put the pieces together

Step 4: Develop a Smart Specialisation Strategy and Plan including Social Innovation

Step 6: Transition Innovation platform

Step 7: Incubation Trajectory specifically targeted at Social Innovation

Step 8: Social Innovation Cluster/ Park

These steps can help regions tackle existing problems (European Commission 2013)

Step 1	Identify the main stakeholders at a local, regional and national level. They must be able to drive forward social innovation with a defined strategy and concrete projects. What academic supports can you engage with ? What is the most relevant social innovation idea in response to an identified challenge
Step 2	Set the criteria for evaluating social innovation
Step 3	Identify future trends.
Step 4	Develop a regional innovation action plan and strategy with a clear vision, stating priorities and identifying social challenges that need to be addressed. Develop an awareness campaign targeting local, regional and national policy makers about the importance of social innovation
Step 5	Link with training organisations and other organisation in the area of social innovation. Initiate discussions with other organisations interested in social innovation
Step 6	Design and organise a sequence of actions to promote cooperation among stakeholders on a common theme.
Step 7	Promote the creation of social innovation incubators to provide services to social enterprises
Step 8	What are the benefits to creating a Social Innovation Cluster ?
Step 9	What is a Special Economic Zone and what are the benefits of it in terms of social innovation ?
Step 10	How would you measure the success of social innovation at local, regional, national level ? Identify best practice in your region.

For a more detailed look at the 10 steps please consult [social innovation 2013.pdf \(europa.eu\)](#) p.59-70.